

## A useful addition to any CCIE or CCNP Lab

### ISDN Wherever you need it!

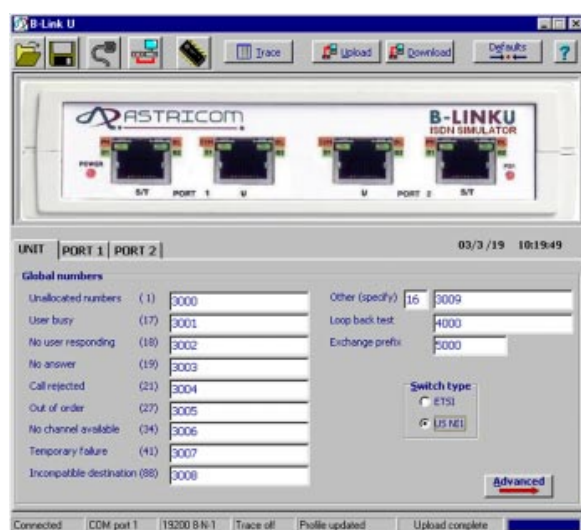
- Simulate two independent ISDN lines on your desktop.
- Connect to each port via the U or S/T interface.
- Allows simple testing and demonstration of ISDN customer premises equipment.
- Demonstrate your terminals working at their best across a 'perfect' ISDN line during trade shows, training courses or in the lab.
- Compact, lightweight and low cost.
- Provides a reliable connection with no call charges every time that you need it.



**B-LinkU** provides two ports with connection via S/T or U interface on each port.

The **B-LinkU** is a compact basic rate ISDN network simulator with 2 ports. Terminals may be connected via the U interface or the S/T interface. Both ports are completely independent allowing you to connect 2 terminals with the same interface type or one U interface terminal and one S/T interface terminal.

LED indicators on the front panel provide a clear indication of line status and activity during initial terminal connection and subsequent calls. The **B-LinkU** performs all of the complex call handling procedures without the need for a PBX or Switch and therefore eliminates many of the problems associated with real lines.



Each **B-LinkU** is supplied with a simple default configuration allowing you to plug and play. Intuitive Windows software supplied, allows you to easily configure and save any required changes. The software also provides access to the powerful protocol trace facility, which displays all messages transmitted and received on each line with user selectable filters for product test and development applications.

### B-Link Models Available

B-LinkU - 2 active ports (either U or S/T interface)

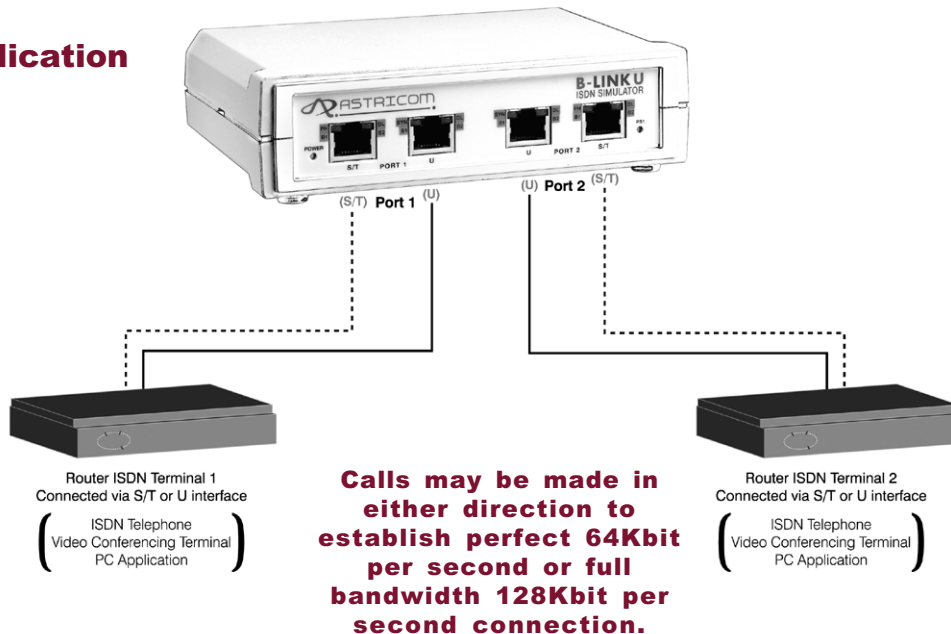
B-Link2 - 2 basic rate ISDN S/T ports

B-Link3 - 3 basic rate ISDN S/T ports

# B-LinkU 2 port basic rate ISDN network simulator

Using the **B-LinkU** to simulate the ISDN network between two terminals.

## Typical Application



## Specification

### Switch Type Supported

ETSI Euro-ISDN (subset of CTR3)  
Also supports SPID's (subset of National ISDN 1/2)

### Ports

2 active ports using either U or S/T interface

### Interface Type

2 wire U interface, 1 x RJ45 socket per port  
4 wire S/T interface, 1 x RJ45 socket per port

### LED Indicators

B1/ B2 Channel Active  
PS1 Present - S/T Ports  
SYN/PH (Physical Layer - Layer 1) Active  
DL (DataLink Layer - Layer 2) Active

### Configuration Interface

Serial Port - 9 way D type

### PC Operating System

(Note: PC required only for configuration)  
Windows 95/98/NT4/2000/XP

### PS1 (Power Source 1)

The B-LinkU supplies normal PS1 (phantom power) on each of its S/T interface basic rate ports.

### Power Supply

Provided with a compact mains power adapter, please state preferred model - UK, European, US, Australian.

### Accessories

Each B-LinkU is supplied with:  
Windows configuration software on CD ROM (includes protocol analysis and online HELP), Serial Lead, Power Adapter.

### Size/Weight

15.3cm x 10.3cm x 4cm (6" x 4.25" x 1.75")  
330g, (11oz)

### Temperature

Operating/Storage: 0 - +40° C

### Relative Humidity

90% non-condensing

*Tested to comply with FCC standards. For office use.  
Specifications subject to change without prior notice. Issue 1. ©Astricom Ltd 2003.  
Windows is a registered trade mark of Microsoft Corporation.*



## Distributed by:

Connections Through IT Innovation

**Astricom Ltd**

The Wharf, P.O Box 48, Pangbourne, Berkshire, RG8 7EG, United Kingdom

Tel: +44 (0)118 9845600 Fax: +44 (0)118 9844559 email: info@astricom.com website: www.astricom.com