



Product at a glance

- **Complete security for remote offices and telecommuters**

This high-performance security appliance integrates a firewall, VPN, and traffic shaping in a single unit for small offices and telecommuters.

- **Available for 10-users or 25-users**

Two configurations depending on user needs and a migration path from 10 to 25 users as network needs expand.

- **Easy to install**

The NetScreen-5 features a menu-based, wizard-driven installer so even non-security experts can complete the necessary steps in just a few minutes.

- **Centralized monitoring and management**

Ongoing monitoring and management of the NetScreen-5 can be centralized providing alarms and diagnostics as well as configuration updates, software version upgrades, and reporting.

Product overview

NetScreen-5 is an Internet security appliance integrating firewall, virtual private networking (VPN) and traffic shaping functionality. It features wire-speed Ethernet performance for remote offices and telecommuters. The NetScreen-5 enables enterprises and service providers to deliver secure, cost-effective Internet connections to remote offices and telecommuters. Like all NetScreen appliances, it can be easily configured and managed through a web browser, CLI, or centrally managed with NetScreen Global Manager. The NetScreen-5 belongs to a suite of integrated security products that have been optimized for performance and ease of use in a full range of business environments.

Firewall

NetScreen-5 provides a secure firewall solution for protecting a single user or a small LAN from the outside world in a single dedicated hardware appliance. NetScreen-5's full-featured firewall uses technology based on stateful inspection.

NetScreen's custom-built ASIC processes the firewall access policies and encryption algorithms in hardware, making it significantly higher performance than a software-only solution. The NetScreen-5 meets the performance needs of even the most demanding remote environments.

VPN

NetScreen-5's integrated VPN solution extends Intranet/Extranet security reach over public networks to remote and branch offices,

providing consistent LAN-to-LAN security across the network. This is accomplished through the use of encryption of data transferred over the wide-area using the industry standard IPSec protocol. NetScreen's IPSec implementation is interoperable with other vendors that have implemented standards-based IPSec.

Traffic shaping

NetScreen-5's traffic shaping allows an administrator to monitor, analyze and allocate bandwidth utilized by various types of network traffic in real time. Applications and users can be prioritized using IP address or other criteria for providing different levels of service.

Easy installation and deployment

The NetScreen-5 features a simple, wizard driven interface for easy installation by non-security experts. For enterprises or service providers, the software installation application, QuickStart, can be used to configure one or multiple NetScreen-5 appliances concurrently. NetScreen also provides a web-based application and CLI that provides even greater flexibility in configuration.

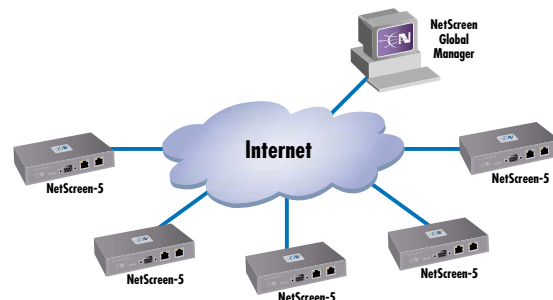
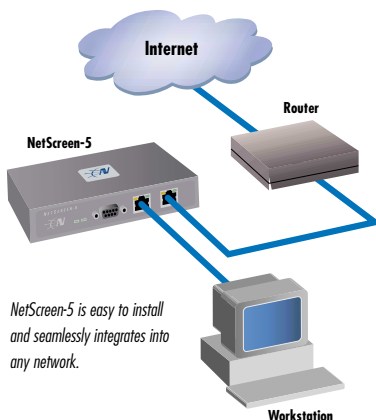
Centralized management

The NetScreen-5 can be easily and securely managed individually through a web browser, CLI, or it can be managed centrally with NetScreen Global Manager. Global Manager is a key application for network managers responsible for multiple NetScreen appliances, as it provides for centralized concurrent configuration, monitoring, and management of up to 1,000 devices.



NETSCREEN™

Broadband Internet Security Solutions



NetScreen product warranty and services

NetScreen-5's standard hardware warranty is for a period of one year. The system software has a 30-day warranty that it will meet published specifications. Optional service products are also available such as extended hardware and software warranty. These products are recommended to ensure the system is kept updated with the latest software enhancements and to ensure high availability for end-users. Phone support services and training courses are also available from NetScreen.

Specifications:

Users

Available for 10 users or for 25 users

Performance

Advanced firewall policies and VPN encryption (IPSec) at up to 10 Mbps

VPN

10 concurrent VPN tunnels, IPSec standard security, 56-bit DES, Triple-DES (where allowed by law) encryption, key management, manual and automated – IKE (ISAKMP), authentication: MD5, SHA-1

NetScreen has tested the NetScreen-5 with other vendors VPNs for compatibility enabling coexistence in a multivendor network.

Checkpoint VPN-1 using IKE
Raptor firewall using manual key

See www.netscreen.com/pub/matrix

Firewall

Network address translation (NAT), transparent mode, stateful inspection, real time alarming, and logging. ICSA certified.

System Management

Web based configuration or multi-site management via CLI or NetScreen Global Manager

Traffic Shaping

Guaranteed bandwidth, maximum bandwidth, traffic prioritization

DHCP Server and Client

Dynamic IP address assignment by DHCP server or request for IP address by client for class C network

Standards Supported

ARP, TCP/IP, UDP, ICMP, DHCP (server and client), HTTP, RADIUS, IPSec (IPESP), MD5, SHA-1, DES, Triple-DES, IKE (ISAKMP), TFTP (client) SNMP, NTP

Interface

Two 10 BaseT Ethernet ports: (Trusted, Untrusted), RS-232 diagnostics port

Software Upgrades

Via web browser or TFTP Server

Power

DC Power, input 5V, power consumption 7.5W

Dimensions

5 inches (L) x 6.2 inches (W) x 2.1 inches (H), weight: 1lb.

Certification

FCC, UL, CE, CUL, ICSA

Environmental

Temperature: 40-105 degrees F, 5-40 degrees C, Humidity: 5-90%, non-condensing

Ordering information

Product	Part Number
NetScreen-5 10 User	
NetScreen-5a* US Power cord	NS-005-001
NetScreen-5e US Power cord	NS-005-002
-Export model (56 bit DES only)	
NetScreen-5a UK Power cord*	NS-005-003
NetScreen-5e UK Power cord	NS-005-004
-Export model (56 bit DES only)	
NetScreen-5a Europe Power cord*	NS-005-005
NetScreen-5e Europe Power cord	NS-005-006
-Export model (56 bit DES only)	
Upgrade from NetScreen-5 10 Users to 25 Users	NS-005-25U
NetScreen-5 25 User	
NetScreen-5a* US Power cord	NS-005-251
NetScreen-5a US Power cord (5 Pack)	NS-005-251-5PK
NetScreen-5e US Power cord	NS-005-252
-Export model (56 bit DES only)	
NetScreen-5e US Power cord (5 Pack)	NS-005-252-5PK
-Export model (56 bit DES only)	
NetScreen-5a UK Power cord*	NS-005-253
NetScreen-5a UK Power cord* (5 Pack)	NS-005-253-5PK
NetScreen-5e UK Power cord	NS-005-254
-Export model (56 bit DES only)	
NetScreen-5e UK Power cord	NS-005-254-5PK
-Export model (56 bit DES only) (5 Pack)	
NetScreen-5a Europe Power cord*	NS-005-255
NetScreen-5a Europe Power cord* (5 Pack)	NS-005-255-5PK
NetScreen-5e Europe Power cord	NS-005-256
-Export model (56 bit DES only)	
NetScreen-5e Europe Power cord	NS-005-256-5PK
-Export model (56 bit DES only) (5 Pack)	

*International shipment requires export authorization form for each end use customer.



2860 San Tomas Expressway
Santa Clara, CA 95051
Phone: 408-330-7800
Fax: 408-330-7850

www.netscreen.com

For more information on NetScreen products, call toll-free 1-800-638-8296

©2000 NetScreen Technologies, Inc. All rights reserved. Information in this document is subject to change without notice. NetScreen Technologies, Inc. assumes no responsibility for errors that appear in this document. NetScreen Technologies, Inc. the NetScreen logo, NetScreen-5, 10 and 100, and NetScreen Global Manager are trademarks of NetScreen Technologies, Inc. All other trademarks and registered trademarks are the property of their respective companies.
Literature Part Number: 2000.2.15.2.5