

DC2000

E1 G.703 to EIA-530,
V.35 or X.21 Converter

- Cost effective E1 G.703 2.048 Mbit/sec interfacing
- EIA-530, V.35 or X.21 DTE port for router connection
- Easy to install & maintain
- Diagnostics give peace of mind
- Built to European Standards



The DC2000 provides a new level of price/performance in connecting E1 G.703 2 Mbit/s leased lines to DTE equipment such as a router presenting an EIA-530, V.35 or X.21 interface. Data is carried on the E1 line as unstructured payload.

In addition to providing very cost-effective interfacing, the DC2000 provides a test and troubleshooting facility with Remote loop and Local loop test functions as well as a Remotely activated loop test which often eliminates the need for an engineer to visit a remote site for diagnosis of problems. LEDs on the units front fascia panel provide information on the DC2000's operational status.

The figure above shows two DC2000 units with front and rear panels visible. AC mains supply is switchable on the rear panel between 240 VAC and 110 VAC. DC models are also available for a supply voltage of -48VDC.

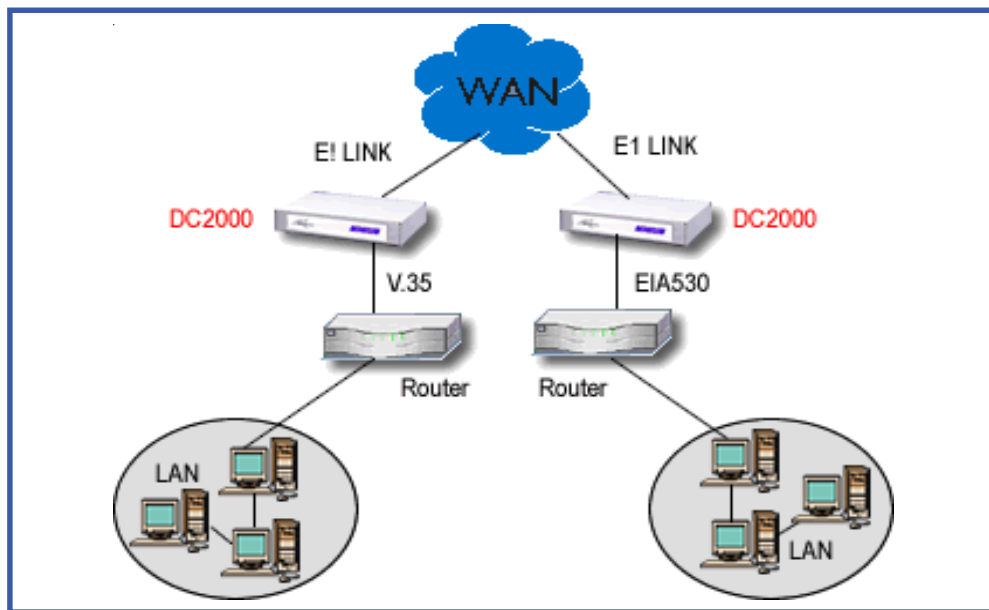
About Metrodata

Metrodata are experts in network connectivity solutions. Based near London Heathrow Airport, we are leading designers and manufacturers of high performance communication hardware for the Fixed line, Satellite, Wireless, Systems integration, Service provision and Corporate networking communities.

Metrodata connectivity products provide solutions for interface conversion, interface extension and ATM networking from Nx64Kbit/s through to Sonet/SDH.

Metrodata's sound technical and commercial understanding of international data networking issues ensures that we have the solutions for current and future networking needs. Our continuous development program means that Metrodata solutions are state of the art and provide an economic cost of ownership to our customers.

Application Diagram



Specifications

Line E1 Interface		Status LED & Diagnostics	
Port	G.703, 75 ohm unbalanced, 120 ohm balanced	Alarms	Major: LOS, Minor: AIS, Mains power on/off
Interface	BNC (75 ohm) RJ45 (120 ohm)	Loopbacks	Local loop, Remote loop, Remotely activated loop
Line Coding	HDB3	Data	Tx data, Rx data
Bit Rate	2.048 Mbit/s +/- 50 ppm	Environment	
Barrier	Fully barriered per EN41003	Temp	0 - 35 degC
E1 BNC	RG59 600m	Pressure	95% RH, non-condensing
Cable length	UR202 750m	Power supply	
E1 RJ45	Belden 8132 175m	Mains Power 1	220-240 VAC, or by switch
Cable length	Belden 9841 300m	Mains Power 2	110-117VAC, 60 Hz, 0.5 amp
DTE Interface		DC Supply	-48VDC, 1 amp
Port	V.35, EIA-530 or X.21 (RS449 with external cable)	Packaging	
Interface EIA-530	25 way D-type	Type	Modem, 1U high without feet
Interface V.35	ISO2593, 34 way female M-rack	Rackmount dimensions	260 x 215 x 44 (without feet) (W x D x H mm)
Interface X.21	ISO4903, 15 way D-type	Desktop dimensions	260 x 215 x 48 (with feet) (W x D x H mm)
Interface RS449	X.21 plus external cable	AC models Part Number	
Configuration		E1 BNC/EIA-530	80-05-001
Clocks	Internal, E1 Receive, DTE mode Set by rear dip switches	E1 BNC/V.35	80-05-002
Compliance & Approvals		E1 BNC/ X.21	80-05-401
Performance	BNC version: OTR.001 2DS RJ45 version: CTR12, CTR 13, E1 interface: G.703, G.823	RJ45 EIA-530	80-05-003
Safety	EN41003, EN60950	RJ45 V.35	80-05-004
EMC	EN55022, EN50082	DC models Part Number	
		E1 BNC/EIA-530	80-21-001
		E1 BNC/V.35	80-21-002
		E1 BNC/ X.21	80-21-401
		RJ45 EIA-530	80-21-003
		RJ45 V.35	80-21-004

For more data on Metrodata products and services, visit our website at www.metrodata.co.uk