

# Single-Port Ethernet WAN Interface Card for Cisco 1700 series Routers

## A Solution for Adding Broadband or Perimeter LAN Connectivity to Your Network

The Cisco Single-Port Ethernet WAN Interface Card (WIC-1ENET) offers customers using a Cisco 1700 series router the option of an additional Ethernet port for enabling broadband Internet access or deployment of a perimeter LAN or demilitarized zone (DMZ). Ideally suited for small and medium businesses and small branch offices, the Ethernet WIC offers a cost-effective method for expanding the capability of the Cisco 1700 series router.

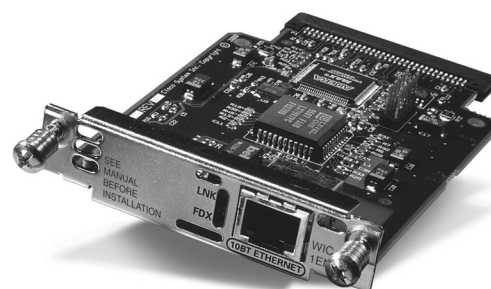
The Cisco WIC-1ENET extends the capabilities of Cisco 1700 series access routers, providing a second Ethernet port for additional network deployments. When installed in the WIC slot of the router, this one-port 10BaseT Ethernet WIC enables delivery of secure Internet connectivity using any broadband access device, including digital subscriber line (DSL) and cable modems. The 10/100 Fast Ethernet port onboard the Cisco 1700 series router remains connected to an internal LAN, whereas the second Ethernet port provided by the WIC-1ENET can be connected to an external DSL or cable modem. (See Figure 2.)

Alternatively, the WIC-1ENET can be used for deployment of a separate DMZ on the perimeter of the network. A DMZ enables Internet users to access public servers, including Web and File Transfer Protocol (FTP) servers, while maintaining security for the company's private LAN. (See Figure 3.)

The Cisco 1700 series modular access routers with WIC-1ENET offers support for New World services, including virtual private networks (VPNs), voice over IP (VoIP), broadband, and combined voice and data networking. The addition of a

WIC-1ENET offers a cost-effective alternative for implementing new broadband services, while preserving investment in existing equipment.

**Figure 1** Single-Port Ethernet WAN Interface Card for the Cisco 1700 Series



### WIC-1ENET Feature Summary

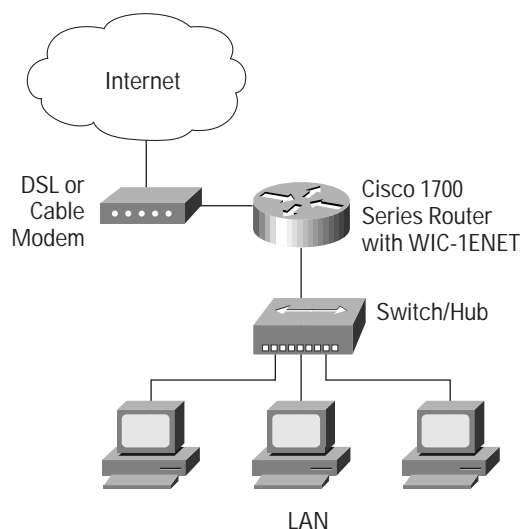
- Provides one standards-based 10BaseT Ethernet network interface
- Operates in half- and full-duplex modes
- Supports Point-to-Point Protocol (PPP) over Ethernet (PPPoE) capability
- Offers full management features for configuration, monitoring, and troubleshooting
- Includes LED indicators that provide status information



**Table 1** Features and Benefits of the Single-Port Ethernet WAN Interface Card for Cisco 1700 Series

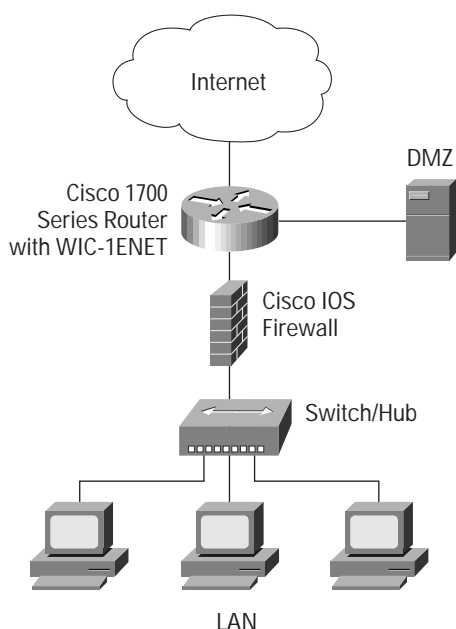
Feature	Benefit
<b>Dual Ethernet Capability</b>	<ul style="list-style-type: none"><li>• This capability allows companies to have their choice of connecting a broadband access device (such as DSL or cable modem) or adding a DMZ, while staying connected to trusted LAN.</li><li>• This capability delivers new services using a single router, saving companies the cost of additional equipment.</li></ul>
<b>PPPoE Support</b>	<ul style="list-style-type: none"><li>• This support enables the router to be authenticated on a service provider's network.</li><li>• This support eliminates the need to install and maintain PPPoE client software on each desktop.</li></ul>
<b>Onboard LEDs</b>	<ul style="list-style-type: none"><li>• Integrated LEDs indicate valid link status and duplex mode status.</li><li>• An LED on the front panel of the router provides data transmission activity status of the WIC-1ENET port.</li></ul>
<b>Comprehensive Management Tools</b>	<ul style="list-style-type: none"><li>• Easy-to-use management tools provide the ability to configure, monitor, and troubleshoot the WIC-1ENET, as well as integration with the full functionality of the Cisco 1700 series router management system.</li></ul>
<b>Robust Cisco IOS® Operating System</b>	<ul style="list-style-type: none"><li>• This software provides support for a wide range of network protocols.</li><li>• Cisco IOS Software features include intelligent packet forwarding, security, and network management capabilities.</li></ul>

**Figure 2** Configuring a Cisco 1700 Series Router for Broadband Internet Access





**Figure 3** Configuring a Cisco 1700 Series Router for a Perimeter LAN or DMZ



#### Product Number and Description

Product Number	Description
WIC-1ENET	One-port Ethernet WAN interface card
WIC-1ENET=	One-port Ethernet WAN interface card

#### Single-Port Ethernet WAN Interface Card Specifications

##### Network Interface

- 10BaseT Ethernet interface with one RJ-45 port
- 10-Mbps data transfer rate
- Half- and full-duplex data-transfer support

##### LED Indicators

- Indicates valid link for proper operation
- Full duplex indicates bidirectional data transfers
- Uses the router front panel activity LED to provide data activity status

##### Connectors and Cables

- Single RJ-45 connector
- Ethernet cables must be purchased separately

##### Management

- Full integration with Cisco router management tools

##### Dimensions and Weight

- Width: 3.1 in. (7.9 cm)
- Height: 0.8 in. (2.1 cm)
- Depth: 4.8 in. (12.2 cm)
- Weight: .12 lb (54.4 g)

##### Regulatory Compliance, Safety, EMC, Network Homologation

When installed in a Cisco 1700 series router, the WIC-1ENET does not change the standards (Regulatory Compliance, Safety, EMC, Network Homologation) of the router itself. See data sheets for the Cisco 1700 series routers.

##### Standards

- IEEE 802.3 Ethernet standards

##### Environmental

- Operating temperature: 0 to 40 C (32 to 104 F)
- Nonoperating temperature: -20 to 65 C (-4 to 149 F)
- Relative humidity: 10 to 85 percent noncondensing operating; 5 to 95 percent noncondensing, nonoperating

##### Service and Support

Service and support for the single-port Ethernet WAN interface card is available on a one-time or annual contract basis. Support ranges from help-desk assistance to proactive, onsite consultation. All support contracts include major Cisco IOS Software updates, full access rights to Cisco Connection Online, and 24-hour-a-day technical assistance. Contact your local sales office for further information.



Corporate Headquarters  
Cisco Systems, Inc.  
170 West Tasman Drive  
San Jose, CA 95134-1706  
USA  
www.cisco.com  
Tel: 408 526-4000  
800 553-NETS (6387)  
Fax: 408 526-4100

European Headquarters  
Cisco Systems Europe  
11, Rue Camille Desmoulins  
92782 Issy Les Moulineaux  
Cedex 9  
France  
www.cisco.com  
Tel: 33 1 58 04 60 00  
Fax: 33 1 58 04 61 00

Americas Headquarters  
Cisco Systems, Inc.  
170 West Tasman Drive  
San Jose, CA 95134-1706  
USA  
www.cisco.com  
Tel: 408 526-7660  
Fax: 408 527-0883

Asia Pacific Headquarters  
Cisco Systems Australia, Pty., Ltd  
Level 17, 99 Walker Street  
North Sydney  
NSW 2059 Australia  
www.cisco.com  
Tel: +61 2 8448 7100  
Fax: +61 2 9957 4350

Cisco Systems has more than 200 offices in the following countries. Addresses, phone numbers, and fax numbers are listed on the

**Cisco.com Web site at [www.cisco.com/go/offices](http://www.cisco.com/go/offices).**

Argentina • Australia • Austria • Belgium • Brazil • Bulgaria • Canada • Chile • China • Colombia • Costa Rica • Croatia • Czech Republic • Denmark • Dubai, UAE  
Finland • France • Germany • Greece • Hong Kong • Hungary • India • Indonesia • Ireland • Israel • Italy • Japan • Korea • Luxembourg • Malaysia • Mexico • The  
Netherlands • New Zealand • Norway • Peru • Philippines • Poland • Portugal • Puerto Rico • Romania • Russia • Saudi Arabia • Scotland • Singapore • Slovakia  
Slovenia • South Africa • Spain • Sweden • Switzerland • Taiwan • Thailand • Turkey • Ukraine • United Kingdom • United States • Venezuela • Vietnam • Zimbabwe

Copyright © 2000, Cisco Systems, Inc. All rights reserved. Printed in the USA. Cisco, Cisco IOS, Cisco Systems, and the Cisco Systems logo are registered trademarks of Cisco Systems, Inc. or its affiliates in the U.S. and certain other countries. All other brands, names, or trademarks mentioned in this document or Web site are the property of their respective owners. The use of the word partner does not imply a partnership relationship between Cisco and any other company. (0010R)